

# NHIC-9260AT

6" Sloped IC Air-Tight Line Voltage New Construction Housing

Source: 75W Max. (Varies by trim)

Type

Project

Catalog No.

Notes

## PRODUCT DESCRIPTION

New construction housing for use in insulated ceilings can be in direct contact with insulation. Air-tight construction provides energy savings by reducing the flow of air through the ceiling. The housing is labeled for use with Nora 6" sloped line voltage trims and compatible with all LED retrofits.

## FEATURES

- IC Air-Tight energy saving by reducing the flow of air through the ceiling
- Rated for direct contact with insulation
- cULus listed for damp location and through branch circuit wiring
- Quick connect provided
- 24-1/2" Bar hangers with captive nails and alignment foot
- Accommodates ceiling pitches from 1/12 to 6/12 with designated trims

## CONSTRUCTION

**Plastic Frame:** High quality 0.035 steel die cut one piece frame. Integral brackets and wingnuts enable housing to be adjusted for 1/12 to 6/12 ceiling pitch. For pitches 7/12 to 12/12, a super slope housing is available ([Click here](#) for more information). Accommodates ceiling thicknesses from 5/8" to 1".

**Housing:** 0.035 white finish housing with riveted wrap and dome cap construction. Integral fold-out torsion spring brackets. Knockouts near top of housing provided for coil springs. Fixture may be installed in areas where it will have direct contact with thermal insulation (Note: Not to be used in direct contact with spray foam insulation).

**Air Flow Restriction:** Housing has factory installed gaskets to restrict airflow from room into ceiling plenum to <2CFM (cubic feet per minute) in accordance with ASTM-283 Air-Tight requirements.

**Clearance:** "IC" Insulated ceiling housings are direct contact rated. Not to be used in direct contact with spray foam insulation.

**Socket:** Galvanized steel socket plate adjusts inside housing for ceiling pitch. Contains a single medium base socket. Protective cap included to protect socket interior during ceiling painting.

**Bar Hangers:** Two 13-3/4" to 24-1/2" adjustable bar hangers with captive nails are included on frame. Hanger bars have T-Bar slot and alignment feet. Bar hangers are parallel to junction box, but can be repositioned 90° perpendicular to junction box if desired. "L" Shaped bar hanger foot to align to bottom of construction joist. A T-Bar notch allows easy installation in a suspended ceiling.

## ELECTRICAL

**Input Voltage:** 120V

**Socket:** Medium base

**Lamp:** Lamp type based on trim selection

**Wattage:** 75W max. (wattage varies based on trim selection)

**Junction Box:** Prewired 25 cubic inch 0.064" thick galvanized steel, with five 1/2", two 3/4" knockouts, four Romex® pryouts, and snap on covers. All leads are #18AWG wire, the ground wire is connected to the bottom, and quick connectors are supplied on all leads. Maximum of 8 no. 12 AWG through branch circuit conductors suitable for at least 90°C permitted in junction box.

**Quick Connect Feature:** Housing contains three UL approved quick connections that allow insertion of 1/4" stripped solid or tinned standard conductors to be inserted into the connector. Connectors are pre-attached to fixture power, common, and ground circuits.

**Thermal Protector:** Standard UL thermal protector rated for 90°C is affixed to inner top surface of housing.

## COMPATIBLE TRIMS

**NP-22** = 6" Plastic Trim with Albalite Lens

**NP-322** = 6" Plastic Trim with Bracket & Albalite Lens

**NT-22** = 6" Metal Trim with Fresnel Lens

**NP-23** = 6" Plastic Trim with Fresnel Lens

**NP-323** = 6" Plastic Trim with Bracket & Fresnel Lens

**NT-23** = 6" Metal Trim with Fresnel Lens

**NP-24** = 6" Plastic Trim with Drop Opal Lens

**NT-24** = 6" Metal Trim with Drop Opal Lens

**NT-25** = 6" Half Moon Wall Wash with Reflector

**NT-28** = 6" BR/PAR30 Eyeball with Metal Trim

**NTM-52** = 6" BR/PAR30 Gimbal Ring with Metal Trim

**NTM-53** = 6" PAR38 Gimbal Ring with Metal Trim

**NTM-615** = 6" Sloped Metal Baffle Trim

**NTP-614** = 6" Sloped Plastic Baffle Trim

**NTS-615** = 6" Sloped Reflector

**NRMC-6S11** = 6" Marquise I LED Retrofit Reflector

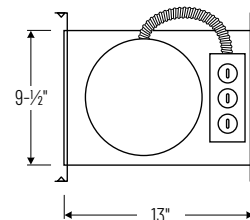
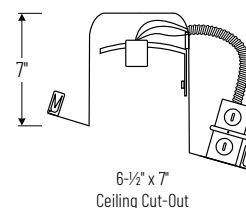
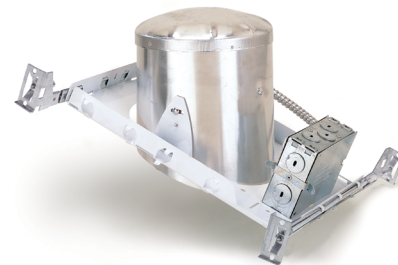
**NRMC-6S12** = 6" Marquise I LED Retrofit Baffle

## LABELS AND LISTINGS

- cULus Listed for Damp Location w/ Feed Through (Wet Location when used with designated trims)
- Meets or exceeds ASTM-283 Air-Tight Requirements



## PRODUCT IMAGES & DIMENSIONS



## 6" Sloped IC Air-Tight Line Voltage New Construction Housing

Housing Type

**NHIC-9260AT:** 6" Sloped IC Air-Tight Line Voltage New Construction Housing, labeled at 75W max.

**NHIC-9260AT/XX:** 6" Sloped IC Air-Tight Line Voltage New Construction Housing, labeled at lower wattage ([Consult Factory](#))

Example: **NHIC-9260AT:** 6" Sloped IC Air-Tight Line Voltage New Construction Housing