

NHIC-926DWQAT

6" Sloped IC Air-Tight Double Wall Line Voltage New Construction Housing

Source: 100W Max. (Varies by trim)

Type

Project

Catalog No.

Notes

PRODUCT DESCRIPTION

New construction double wall housing for use in insulated ceilings can be in direct contact with insulation. Air-tight construction provides energy savings by reducing the flow of air through the ceiling. The housing is labeled for use with Nora 6" sloped line voltage trims and compatible with all LED retrofits.

FEATURES

- IC Air-Tight energy saving by reducing the flow of air through the ceiling
- Rated for direct contact with insulation
- cULus listed for damp location and through branch circuit wiring
- Quick connect provided
- 24-1/2" Bar hangers with captive nails and alignment foot
- Accommodates ceiling pitches from 1/12 to 6/12 with designated trims

CONSTRUCTION

Plastic Frame: High quality 0.035 steel die cut one piece frame. Integral brackets and wingnuts enable housing to be adjusted for 1/12 to 6/12 ceiling pitch. For pitches 7/12 to 12/12, a super slope housing is available ([Click here](#) for more information). Accommodates ceiling thicknesses from 5/8" to 1".

Housing: 0.035 white finish housing with riveted wrap and dome cap construction. Integral fold-out torsion spring brackets. Knockouts near top of housing provided for coil springs. Outer steel housing provides additional air space allowing use of higher wattage light sources.

Air Flow Restriction: Housing has factory installed gaskets to restrict airflow from room into ceiling plenum to <2CFM (cubic feet per minute) in accordance with ASTM-283 Air-Tight requirements.

Clearance: "IC" Insulated ceiling housings are direct contact rated. Not to be used in direct contact with spray foam insulation.

Socket: Galvanized steel socket plate adjusts inside housing for ceiling pitch. Contains a single medium base socket. Protective cap included to protect socket interior during ceiling painting.

Bar Hangers: Two 13-3/4" to 24-1/2" adjustable bar hangers with captive nails are included on frame. Hanger bars have T-Bar slot and alignment feet. Bar hangers are parallel to junction box, but can be repositioned 90° perpendicular to junction box if desired. "L" Shaped bar hanger foot to align to bottom of construction joist. A T-Bar notch allows easy installation in a suspended ceiling.

ELECTRICAL

Input Voltage: 120V

Socket: Medium base

Lamp: Lamp type based on trim selection

Wattage: 100W max. (wattage varies based on trim selection)

Junction Box: Prewired 25 cubic inch 0.060" thick galvanized steel, with seven 1/2" trade size knockouts, four Romex® pryouts, and snap on covers. All leads are #18AWG wire, the ground wire is connected to the bottom, and quick connectors are supplied on all leads. Maximum of 8 no. 12 AWG through branch circuit conductors suitable for at least 90°C permitted in junction box.

Quick Connect Feature: Housing contains three UL approved quick connections that allow insertion of 1/4" stripped solid or tinned standard conductors to be inserted into the connector. Connectors are pre-attached to fixture power, common, and ground circuits.

Thermal Protector: Standard UL thermal protector rated for 90°C is affixed to inner top surface of housing.

COMPATIBLE TRIMS

NP-22 = 6" Plastic Trim with Albalite Lens

NP-322 = 6" Plastic Trim with Bracket & Albalite Lens

NT-22 = 6" Metal Trim with Fresnel Lens

NP-23 = 6" Plastic Trim with Fresnel Lens

NP-323 = 6" Plastic Trim with Bracket & Fresnel Lens

NT-23 = 6" Metal Trim with Fresnel Lens

NP-24 = 6" Plastic Trim with Drop Opal Lens

NT-24 = 6" Metal Trim with Drop Opal Lens

NT-25 = 6" Half Moon Wall Wash with Reflector

NT-28 = 6" BR/PAR30 Eyeball with Metal Trim

NTM-52 = 6" BR/PAR30 Gimbal Ring with Metal Trim

NTM-53 = 6" PAR38 Gimbal Ring with Metal Trim

NTM-615 = 6" Sloped Metal Baffle Trim

NTP-614 = 6" Sloped Plastic Baffle Trim

NTS-615 = 6" Sloped Reflector

NRMC-6S11 = 6" Marquise I LED Retrofit Reflector

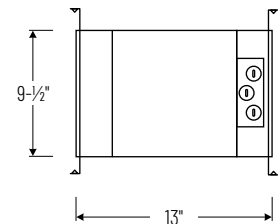
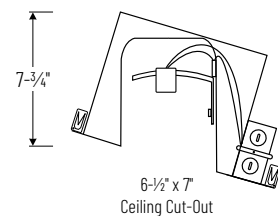
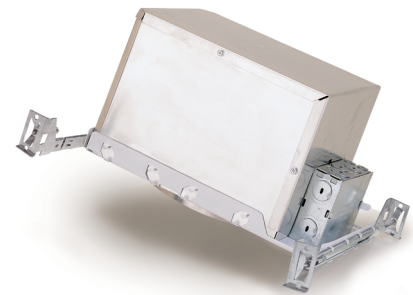
NRMC-6S12 = 6" Marquise I LED Retrofit Baffle

LABELS AND LISTINGS

- cULus Listed for Damp Location w/ Feed Through (Wet Location when used with designated trims)
- Meets or exceeds ASTM-283 Air-Tight Requirements



PRODUCT IMAGES & DIMENSIONS



6" Sloped IC Air-Tight Double Wall Line Voltage New Construction Housing

Housing Type

NHIC-926DWQAT: 6" Sloped IC Air-Tight Double Wall Line Voltage New Construction Housing

Example: **NHIC-926DWQAT:** 6" Sloped IC Air-Tight Double Wall Line Voltage New Construction Housing